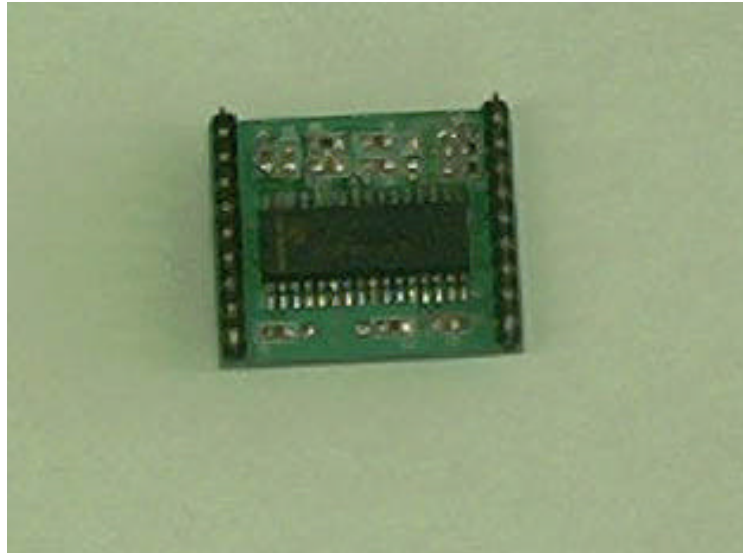


# Mifare Card Core Module

## KCM-500



### 1. FEATURES

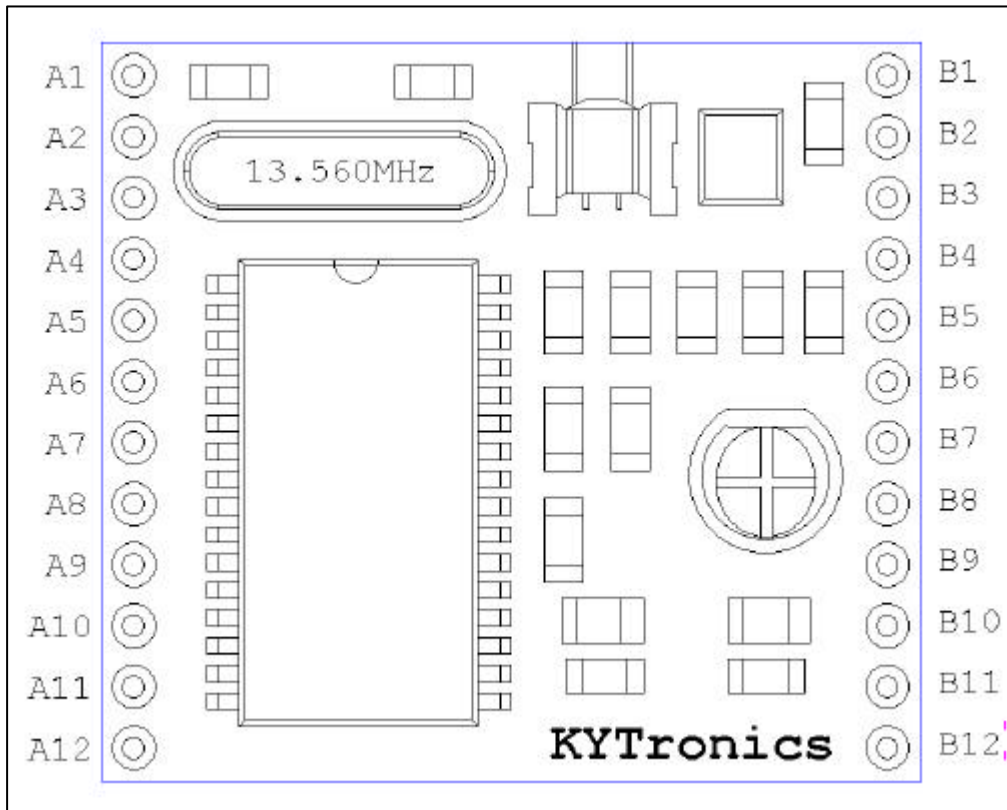
- Highly integrated analog circuitry to demodulate and decode card response
- Proximity operating distance (up to 100 mm)
- Supports MIFARE Classic protocol
- ISO14443A part 1-4 supported
- Parallel u-Processor interface with internal address latch and IRQ line
- Flexible interrupt handling
- Hard reset with low power function
- Power down mode per software
- Compatible with MC500 Module
- Compact size
- Power 5V

**KYTronics**

Tel:+82 31 425 3780 Fax:+82 31 425 3789 e-Mail: [sales@kytronics.co.kr](mailto:sales@kytronics.co.kr)

## 2. PINNING INFORMATION

### 2.1 Pin Configuration



### 2.2 Pin Description

Pin Types : I ...Input, O ...Output, PWR ...Power

PIN	SYMBOL	TYPE	PIN	SYMBOL	TYPE
A1	MFIN	NC	B1	ANT3	
A2	MFOUT	NC	B2	ANT2	
A3	RESET	I	B3	ANT1	
A4	IRQ	O	B4	A2	I
A5	CS#	I	B5	A1	I
A6	WR#	I	B6	A0	I
A7	RD#	I	B7	ALE	I
A8	D0	I/O	B8	D7	I/O
A9	D1	I/O	B9	D6	I/O
A10	D2	I/O	B10	D5	I/O
A11	D3	I/O	B11	D4	I/O
A12	GND	PWR	B12	VCC	PWR

### 3. ELECTRICAL CHARACTERISTICS

#### 3.1 Absolute Maximum Ratings

SYMBOL	PARAMETER	MIN	MAX	UNIT
Tamb,abs	Ambient or Storage Temperature Range	- 40	+150	°C
VCC	DC Supply Voltages	- 0.5	6	V
Vin,abs	Absolute voltage on any digital pin to GND	- 0.5	VCC+0.5	V

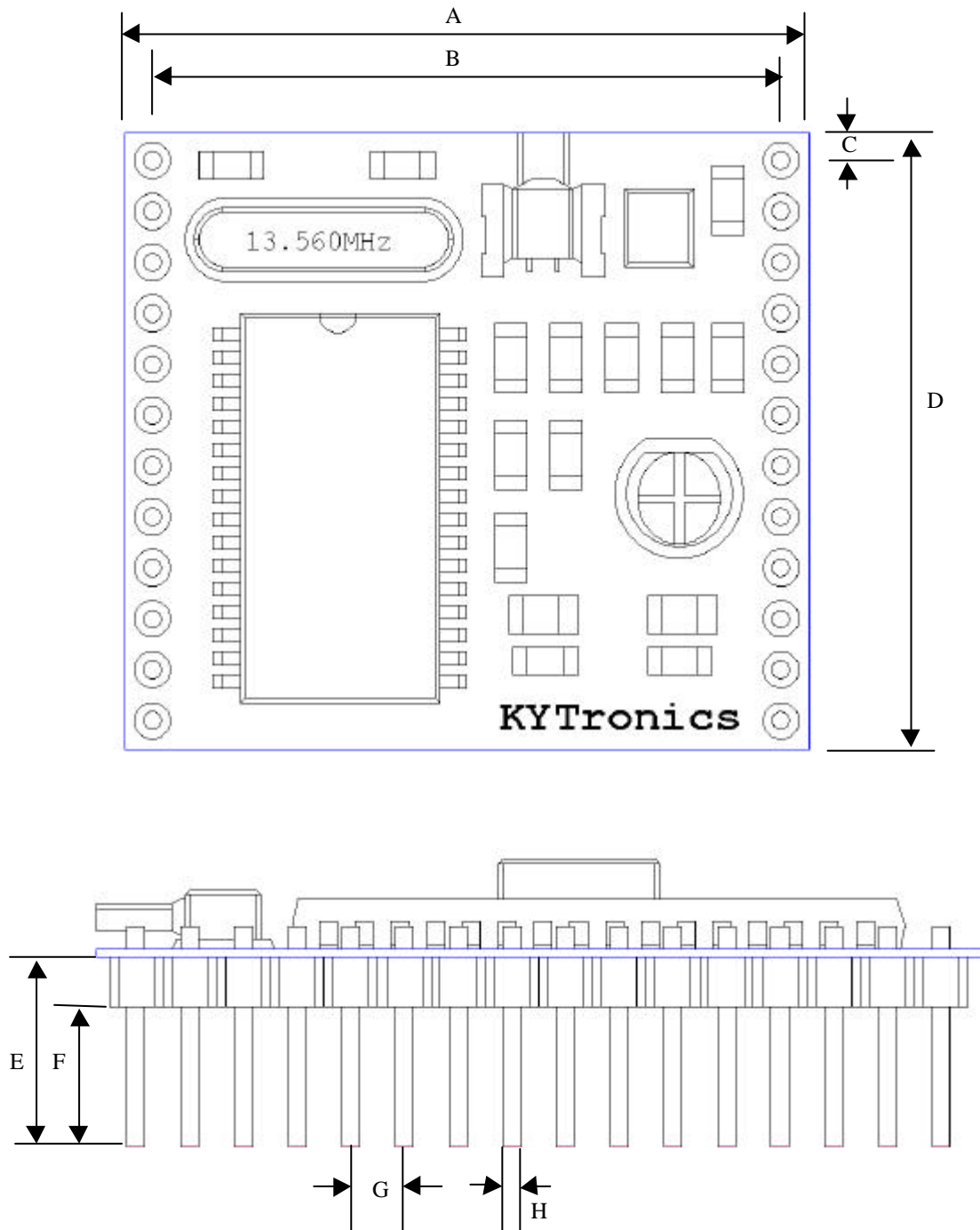
#### 3.2 Operating Condition Range

SYMBOL	PARAMETER	MIN	TYP	MAX	UNIT
Tamb	Ambient Temperature	0	25	+70	°C
VCC	DC Supply Voltages	4.5	5.0	5.5	V

#### 3.3 Current Consumption

SYMBOL	CONDITIONS	MIN	TYP	MAX	UNIT
ICC	Stand by Mode		15		mA
	Continuous Wave		56	150	mA

#### 4. MODULE OUTLINE



UNIT	A	B	C	D	E	F	G	H
mm	30.48	27.94	1.27	30.48	8.67	6.10	2.54	0.67