

<b>Doc No</b>	<b>KYT74XX SERIES SPECIFICATIONS</b>	<b>REV</b>	<b>PAGE</b>	<b>DATE</b>
		A	1 OF 32	2008. 08 .20.

# **KYT-74XX**

**Manual Insertion Type  
RS-232C Interface Type  
Magnetic Card Read &  
IC Card Read / Write**

**3<sup>rd</sup> Floor, A-Dong,**

**Twin Town-Bldg, 703-2.**

**Gojan-Dong, AnSan-City,**

**Kyung Ki-Do, Korea (zip : 425-960)**

**Tel : 82 - 31 - 485 - 9480**

**Fax : 82 - 31 - 485 - 9488**

**E-mail : sales@kytronics.co.kr**

**<http://www.kytronics.co.kr>**



<b>Doc No</b>	<b>KYT74XX SERIES SPECIFICATIONS</b>	<b>REV</b>	<b>PAGE</b>	<b>DATE</b>
		A	3 OF 32	2008. 08 .20.

## **C O N T E N T S**

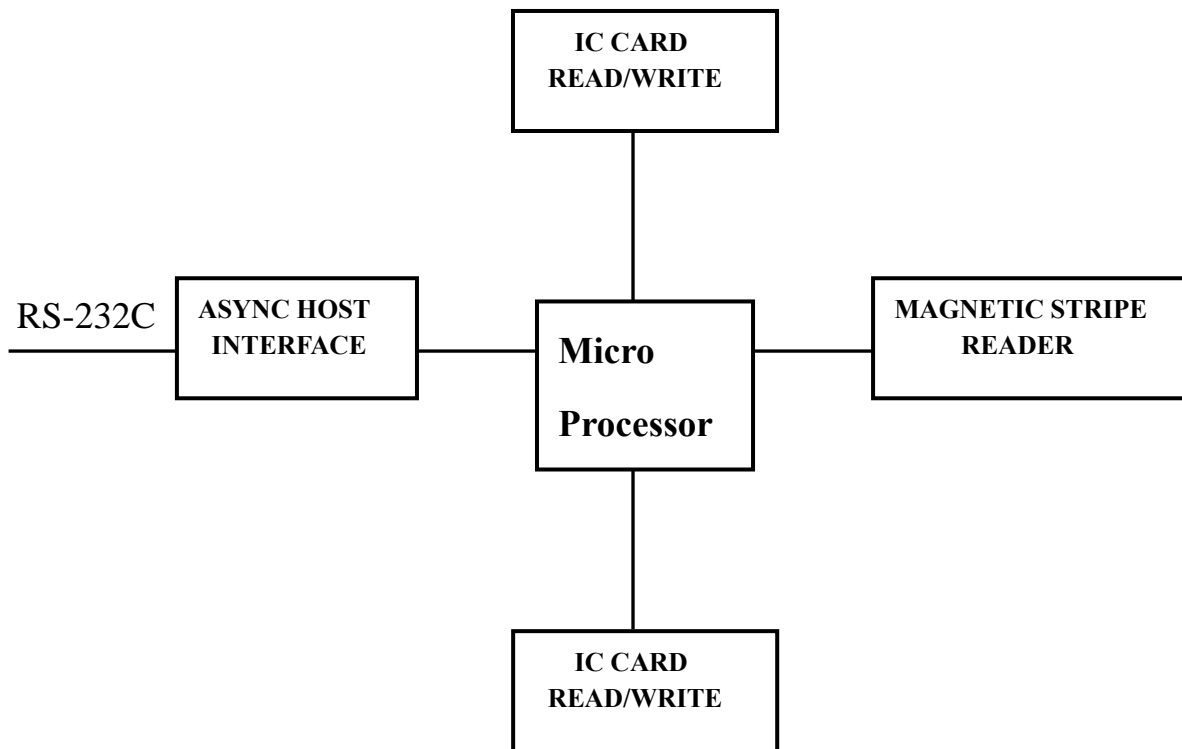
<b>1. Overview -----</b>	<b>4</b>
<b>2. System Block Diagram -----</b>	<b>4</b>
<b>3. Configuration Table -----</b>	<b>5</b>
<b>4. Features -----</b>	<b>7</b>
<b>5. Environmental Requirements -----</b>	<b>7</b>
<b>6. Specifications -----</b>	<b>7</b>
<b>7. Interface Requirements -----</b>	<b>8</b>
<b>8. IC Card Process -----</b>	<b>9</b>
<b>9. RF Card Process -----</b>	<b>9</b>
<b>10. Technical Drawing -----</b>	<b>10</b>
 <b>Annex</b>	
<b>Interface -----</b>	<b>11</b>

<b>Doc No</b>	<b>KYT74XX SERIES SPECIFICATIONS</b>	<b>REV</b>	<b>PAGE</b>	<b>DATE</b>
		A	4 OF 32	2008. 08 .20.

## 1. Overview

KYT- 74XX Series is a set of manual insertion type modules that provide for reading magnetic stripes confirming to ISO 7811. This model has a function that is a reading and writing a IC card confirming to ISO 7816-1,4 (T=0,T=1) card.

## 2. System Block Diagram



<b>Doc No</b>	<b>KYT74XX SERIES SPECIFICATIONS</b>	<b>REV</b>	<b>PAGE</b>	<b>DATE</b>
		A	5 OF 32	2008. 08 .20.

### 3. Configuration Table

K Y X - 7 4 X X X X

INTERFACE	FUNCTION	Body	TRACK	OPTION I	Lock	OPTION II
T : RS-232C L : TTL R : RF&RS-232C	7: MANUAL INSERTION MS/IC CARD READER	0 : - 4 : Flush Bezel	0: - 1: ISO 1 TRK 2: ISO 2 TRK 3: ISO 3 TRK 4: ISO 1,2 TRK 5: ISO 1,3 TRK 6: ISO 2,3 TRK 7: ISO 1,2,3 TRK	0: WITHOUT IC 1: WITH IC 2: WITH SHUTTER 3: IC+SHUUTER 4: IC + SAM 5: IC + SAM + SHUTTER 6: IC+SAM (2 Solt) 7: IC+SAM (4 Solt) 8: IC+SHUTTER+SAM(2 Solt) 9: IC+SHUTTER+SAM(4 Solt)	0: Without Lock 1: Motor Lock	R:RS-232C & WITHOUT RTS,CTS HANDSHAKE

Doc No	KYT74XX SERIES SPECIFICATIONS	REV	PAGE	DATE
		A	6 OF 32	2008. 08 .20.

## 4. Features

- 4.1 Magnetic Stripe reading Triple tracks.
- 4.2 Flush type metal Bezel.
- 4.3 RS-232C interface with a HOST.
- 4.4 IC Card read and writes.
- 4.5 The IC contact is designed to minimize scratch on the IC card.
- 4.6 Mag. Head and Chip contacts are located on the opposite side.
- 4.7 Support T=0 and T=1 protocol.
- 4.8 Supports ISO14443 Mifare® Card.
- 4.9 When Power failure, card locking is released automaticany.

## 5. Environmental Requirements

- 5.1 Operating Temperature and Humidity : 0~55℃, 0~95% RH
- 5.2 Conservation Temperature and Humidity : -20~70℃, 0~95% RH
- 5.3 Vibration : Amplitude 2mm, 10~40 Hz in x, y, z direction

## 6. Specifications

- 6.1 Card Standard : ISO 7811, ISO 7816
- 6.2 Mag. Track No : I(IATA), II(ABA), III(MINTS)
- 6.3 Mag. Reading Method : F2F(FM)
- 6.4 Mag. Reading Density : 210 BPI(I, III), 75 BPI(II)
- 6.5 Mag. Reading Capacity : I(IATA) – 79 Characters.  
: II(ABA) – 40 Characters  
: III(MINTS) – 107 Characters.
- 6.6 Card Thickness : 0.76 ±0.08 mm
- 6.7 Power Consumption
  - 6.7.1 Input voltage : DC +5V ±5%
  - 6.7.2 Ripple : Less than 50 mV p-p
  - 6.7.3 Operating : Less than 800 mA
- 6.8 IC Contact Resistance : Less than 0.5Ω
- 6.9 IC Contact Force : 0.2N ~ 0.6N
- 6.10 Operation Locus : Indoors Only
- 6.11 Magnetic Card Feeding Speed : 15~70 cm/sec
- 6.12 Life – Cycles.
  - : HEAD – Min. 500,000 Cycles
  - : IC CARD CONTACT – Min. 500,000 Cycles
- 6.13 Weight : Including METAL BEZEL – 169g  
Weight can change According to the Customer Version.
- 6.14 Eject Distance : Min. 8mm
- 6.15 Banding Card – Long side : Less than 3mm
- 6.16 Banding Card – Short side : Less than 2mm

<b>Doc No</b>	<b>KYT74XX SERIES SPECIFICATIONS</b>	<b>REV</b>	<b>PAGE</b>	<b>DATE</b>
		A	7 OF 32	2008. 08 .20.

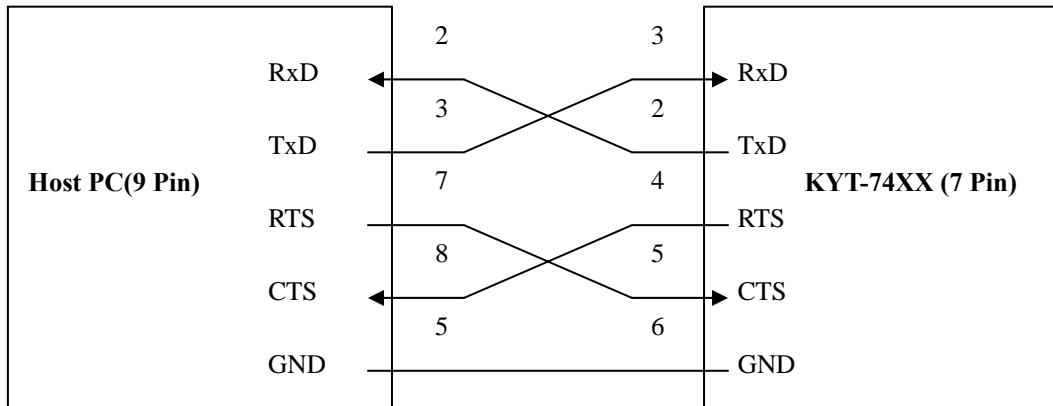
## 7. Interface Requirements.

### 7.1 Standard.

#### 7.1.1 RS-232C Interface.

Part Number: D-SUB Standard 9Pin

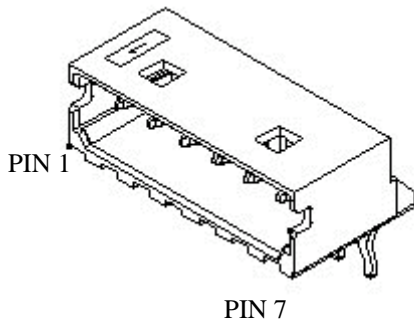
Part Number : 53015-0710(Molex)



- Transmission Distance : Max. 1.5m

#### 7.1.2 Pin Assignment.

\* Connector Location Number : J4 - Part Number : 53015-0710(Molex)



PIN N0	NAME
1	VCC
2	TXD
3	RXD
4	RTS
5	CTS
6	GND
7	GND

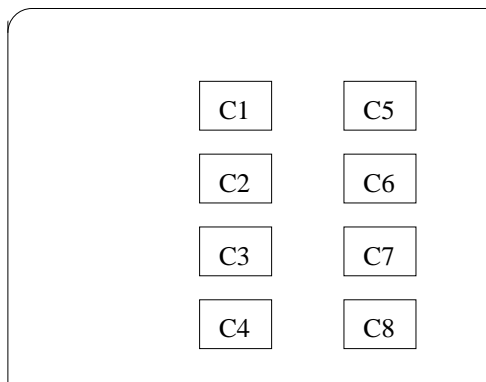
Doc No	KYT74XX SERIES SPECIFICATIONS	REV	PAGE	DATE
		A	8 OF 32	2008. 08 .20.

## 8. IC Card Process

KYT-74XX accepts most of IC cards supporting ISO 7816 T=0 and T=1.

◆ Number and Location of the contacts on IC Card

: Number and location of the contacts on IC Card is specified in ISO 7816-2 figure 2 Refer to Appendix A.



C1 : VCC(Supply voltage)  
 C2 : RST(Reset signal)  
 C3 : CLK(Clock signal)  
 C4 : Reserved to ISO/IEC JTC 1/SC 17 for future use.  
 C5 :GND(Ground)  
 C6 :VPP(Programming voltage)  
 C7 :I/O(Data input/output)  
 C8 :Reserved to ISO/IEC JTC 1/SC 17 for future use.

◆ Power Consumption

: Less than 50mA

## 9. RF Card Process

The KYT-74XX series is a compact read/write dummy terminal and supports ISO 14443 Mifare<sup>®</sup> Contactless Smart Cards.

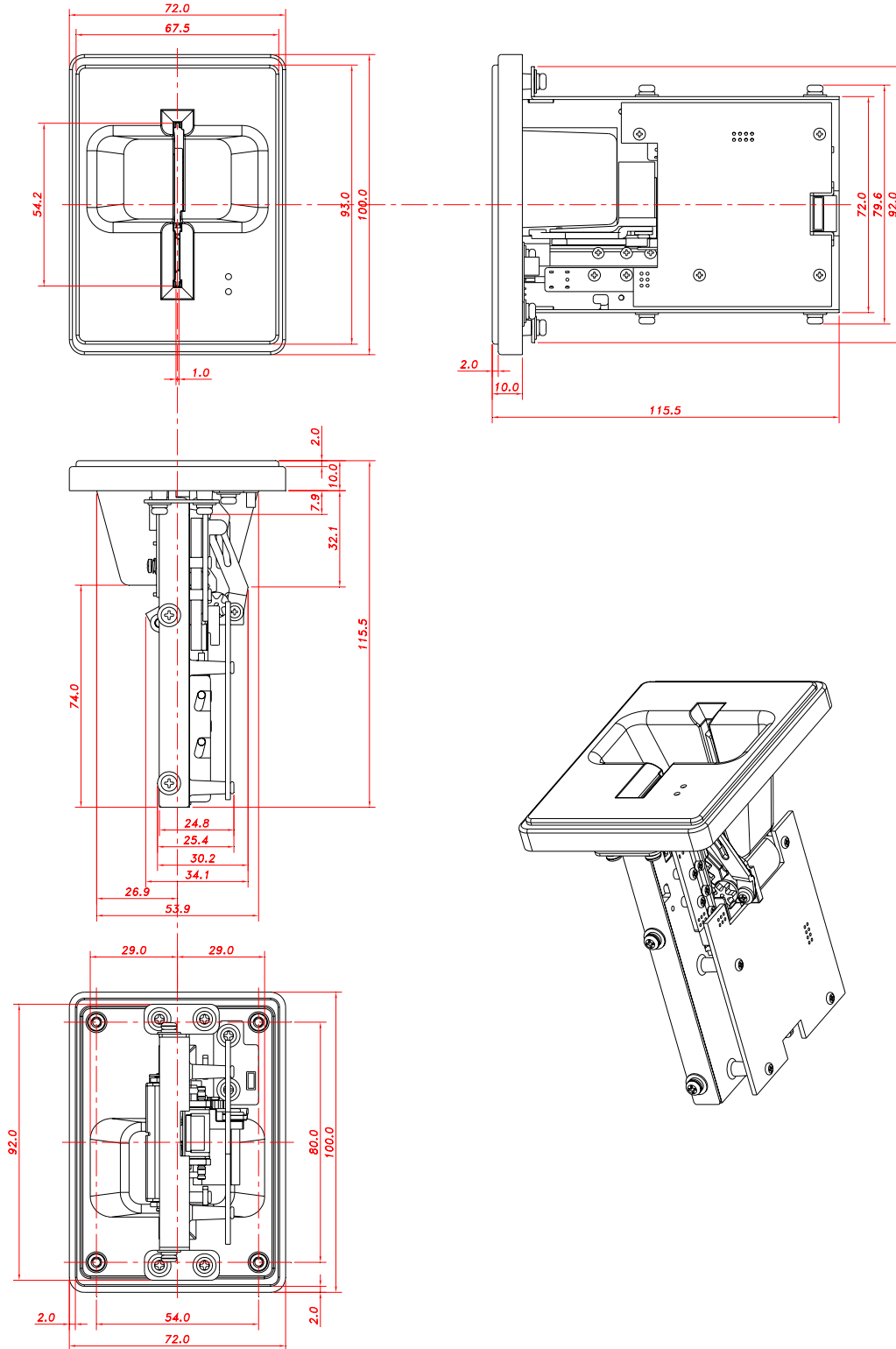
All the process of KYR-74XX consists of Execution and Response according to the Commands from Host. And the Response includes Execution Results.

◆ Power Consumption

: Less than 40mA

Doc No	KYT74XX SERIES SPECIFICATIONS	REV	PAGE	DATE
		A	9 OF 32	2008. 08 .20.

## 11. Technical Drawing



\* Dimensions are subject to be changed according to the customer requirements.

<b>Doc No</b>	<b>KYT74XX SERIES SPECIFICATIONS</b>	<b>REV</b>	<b>PAGE</b>	<b>DATE</b>
			A	10 OF 32

# *Interface*

**MS Reader & IC & RF Card Reader/Writer**

**MODEL: KYT- 74XX Series**

<b>Doc No</b>	<b>KYT74XX SERIES SPECIFICATIONS</b>	<b>REV</b>	<b>PAGE</b>	<b>DATE</b>
		A	11 OF 32	2008. 08 .20.

## 1. Communication Method.

- 1.1. Asynchronous, Half duplex.
- 1.2. Baud Rate: 9600, 19200 38400 (Default: 19200 BPS)
- 1.3. Start Bit: 1Bit
- 1.4. Data Length: 8Bits
- 1.5. Parity: None
- 1.6. Stop Bit: 1Bit

## 2. Control Characters.

NANE	Hex Value	Description
SOH	01	Start of Header
STX	02	Start of Text
ETX	03	End of Text
EOT	04	End of Transmission
ENQ	05	Enquiry
ACK	06	Positive Acknowledge
NAK	15	Negative Acknowledge
CAN	18	Cancel

## 3. Frame Format.

### 3.1. Command structure

STX	Len_H	Len_L	CMD	DATA	ETX	BCC
-----	-------	-------	-----	------	-----	-----

Ref.) Command Sets List

### 3.2. Response structure

#### 3.2.1. Positive Packet structure

STX	Len_H	Len_L	'P'	STAT	DATA	ETX	BCC
-----	-------	-------	-----	------	------	-----	-----

#### 3.2.2. Negative Packet structure

STX	Len_H	Len_L	'N'	ST1	ST2	ETX	BCC
-----	-------	-------	-----	-----	-----	-----	-----



Ref.) Negative Response Code (ST1, ST2) List

### 3.3. Data Length range of Len\_H and Len\_L.

- 3.3.1 Command structure : Data Length from CMD to DATA.
- 3.3.2 Positive Packet structure : Data Length form 'P' to Data.
- 3.3.3 Negative Packet structure : Data Length form 'N' to ST2.

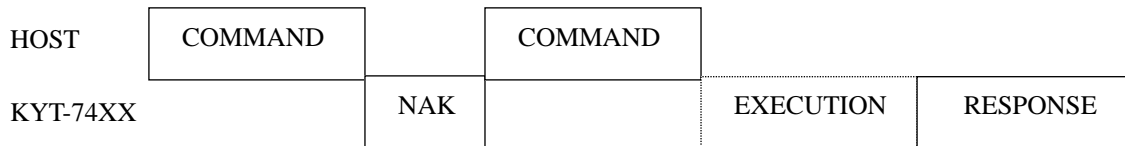
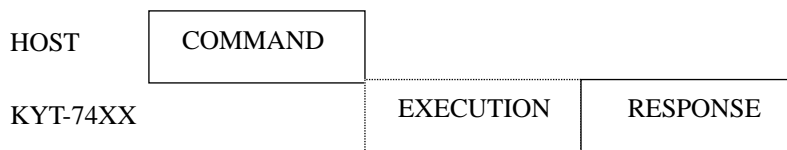
<b>Doc No</b>	<b>KYT74XX SERIES SPECIFICATIONS</b>	<b>REV</b>	<b>PAGE</b>	<b>DATE</b>
		A	12 OF 32	2008. 08 .20.

### 3.4. STAT Structure Format

BIT 7	BIT 6	BIT 5	BIT 4	BIT 3	BIT 2	BIT 1	BIT 0
-------	-------	-------	-------	-------	-------	-------	-------

BIT	Description		REMARK
	1	0	
7	Rear Detect ON	None Detect at Rear Sensor	
6	Front Detect ON	None Detect at Front Sensor	
5	IC Reset ON	No ICC Reset	If Card is got out of Rear Sensor area by artificial means, terminal is deactivated.
4	Is M/S Data	None M/S Data	
3	M/S Forward Read ON	M/S Backward Read ON	
2	X	X	
1	Is SAM2	None SAM2	(Option)
0	Is SAM1	None SAM1	

## 4. Communication Protocol Sequence.



Cf) The point of the time when SLAVE transmit "NAK".

1. When BCC is incorrect. (BCC: Last byte of Each COMMAND).
2. When SLAVE can't receive each byte of COMMAND within 20 ms.

## 5. Command Sets List.

Index	CMD	Description	Note
Request	'S' (53H)	Status Request	
	'V' (56H)	Read F/W Version of unit	
IC Card Control	'R' (52H)	ICC Reset	ICC Control Command
	'P' (50H)	PTSS (PPSS) Application	
	'I' (49H)	ICC Direct Control	
	'D' (44H)	ICC Deactivation.	
RF Card	'F' (46H)	RF Card Control	Cf) Page 27
Setting	'B' (42H)	Baud rate change	
Select	'L' (4CH)	IC Card Select	
MS Read	'M' (4DH)	Magnetic data read command	
Eject	'E' (45H)	Card Eject	

<b>Doc No</b>	<b>KYT74XX SERIES SPECIFICATIONS</b>	<b>REV</b>	<b>PAGE</b>	<b>DATE</b>
		A	13 OF 32	2008. 08 .20.

## 6. Negative Response Code List.

NO	ST1	ST2	Description	NOTE
1	'0'	'1'	Command Not Define	
2	'0'	'2'	No Card	
3	'0'	'3'	Card Fail	
4	'0'	'4'	Card Jam	
5	'0'	'5'	Data Fail	
6	'0'	'6'	Time Out	
7	'0'	'8'	M/S Blank Error	Magnetic Data Interpreter Error
8	'0'	'9'	M/S Preamble Error	
9	'1'	'0'	M/S Parity Error	
10	'1'	'1'	M/S Post amble Error	
11	'1'	'2'	M/S LRC Error	
12	'1'	'4'	IC Card Contact Error	
13	'1'	'5'	IC Card Control Error	
14	'1'	'6'	Command Cancel	
15	'1'	'8'	EEPROM Error	
16	'2'	'0'	Not Detected at the Antenna.	
17	'2'	'1'	MIFARE Card Error (On Authentication )	
18	'2'	'2'	MIFARE Card Error (Not Selected RF Card)	
19	'2'	'3'	MIFARE Card Read Error	
20	'2'	'4'	MIFARE Card Write Error.	
21	'2'	'5'	MIFARE Card Increment(Decrement) Error	
22	'2'	'6'	Read Data Format Error(Character - Error)	
23	'2'	'7'	RF Initial Error	
25	'2'	'8'	The Carrier wave not emitted in antenna	
24	'2'	'9'	RF Card Contact Error	
30	'3'	'0'	Block Error	

<b>Doc No</b>	<b>KYT74XX SERIES SPECIFICATIONS</b>	<b>REV</b>	<b>PAGE</b>	<b>DATE</b>
		A	14 OF 32	2008. 08 .20.

## 7. Command Detail.

### 7.1 Request

#### 7.1.1 'S' (53H): Status Request.

Command Packet

STX	00H	01H	'S'	ETX	BCC
-----	-----	-----	-----	-----	-----

Positive Response Packet

STX	Len_H	Len_L	'P'	STAT	ETX	BCC
-----	-------	-------	-----	------	-----	-----

Negative Response Packet

STX	Len_H	Len_L	'N'	ST1	ST2	ETX	BCC
-----	-------	-------	-----	-----	-----	-----	-----

#### 7.1.2 'V' (56H): F/W Version Read.

Command Packet

STX	00H	01H	'V'	ETX	BCC
-----	-----	-----	-----	-----	-----

Positive Response Packet

STX	Len_H	Len_L	'P'	STAT	DATA	ETX	BCC
-----	-------	-------	-----	------	------	-----	-----

DATA Structure

'V'	X1	':'	X2
-----	----	-----	----

Ex) "V1.00"

Negative Response Packet

STX	Len_H	Len_L	'N'	ST1	ST2	ETX	BCC
-----	-------	-------	-----	-----	-----	-----	-----

### 7.2 IC Card Control.

#### 7.2.1 'R' (52H): Command for sending Reset Signal Contacted IC Card and for receiving ATR from IC Card.

Command Packet

STX	00H	01H	'R'	ETX	BCC
-----	-----	-----	-----	-----	-----

Positive Response Packet

STX	Len_H	Len_L	'P'	STAT	DATA	ETX	BCC
-----	-------	-------	-----	------	------	-----	-----

DATA of above Positive Response Packet is a string of characters as many as a designated number of Byte read from a designated address in Command Packet.

The DATA Format is as below.

ICC ATR
(Length - 2) Byte

EX)

3B	6B	00	00	80	31	90	63	53	46	01	83	03	90	00
----	----	----	----	----	----	----	----	----	----	----	----	----	----	----

Negative Response Packet

STX	Len_H	Len_L	'N'	ST1	ST2	ETX	BCC
-----	-------	-------	-----	-----	-----	-----	-----

<b>Doc No</b>	<b>KYT74XX SERIES SPECIFICATIONS</b>	<b>REV</b>	<b>PAGE</b>	<b>DATE</b>
		A	15 OF 32	2008. 08 .20.

7.2.2 'P'(50H) : PTSS(PPSS) Application.

: ISO 7816 Standard prescribe that PTSS can execute only once directly after 'R' Command execution. And "Set Clock Rate Factor Register" Command can execute every time needed. But This Command set up communication speed of IFM, And so baud rate must be set up before this command execute

Command Packet

STX	Len_H	Len_L	'P'	TA1	ETX	BCC
-----	-------	-------	-----	-----	-----	-----

TA1 (1BYTE)								REMARK
7	6	5	4	3	2	1	0	
0	1			1 ~ 3				PTSS operating between Terminal and ICC according to ISO7816.
1	1			1 ~ 3				Set Clock Rate Factor Register (ICC interface Device – Chip)

<Low Nibble of 2'st Byte>

BIT6 ~ BIT 0	Decryption
0x11	9600bps
0x12	19200bps
0x13	38400bps

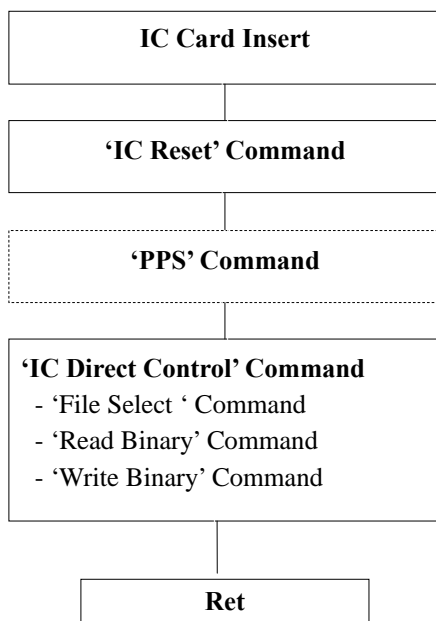
Positive Response Packet

STX	Len_H	Len_L	'P'	STAT	ETX	BCC
-----	-------	-------	-----	------	-----	-----

Negative Response Packet

STX	Len_H	Len_L	'N'	ST1	ST2	ETX	BCC
-----	-------	-------	-----	-----	-----	-----	-----

< PTSS operation method >



Can use 'PPS' command in case of IC card support to PTS.

<b>Doc No</b>	<b>KYT74XX SERIES SPECIFICATIONS</b>	<b>REV</b>	<b>PAGE</b>	<b>DATE</b>
		A	16 OF 32	2008. 08 .20.

### 7.2.3 'T' (49H): ICC Direct Control

This is a command for operation under ISO 7816. Accordingly, user can handle all IC cards Conforming to ISO 7816 – 4 and T = 0, T= 1.

#### Command Packet

STX	Len_H	Len_L	'T'	DATA	ETX	BCC
-----	-------	-------	-----	------	-----	-----

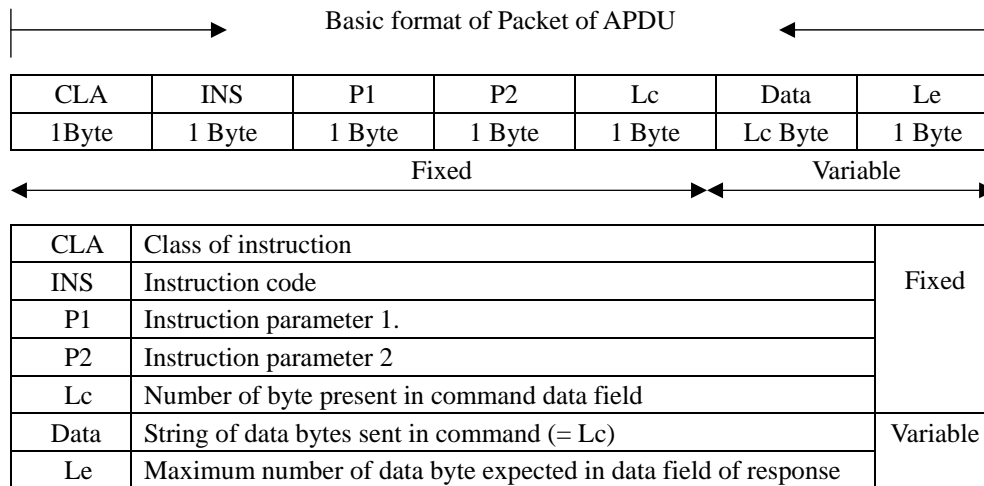
#### Positive Response Packet

STX	Len_H	Len_L	'P'	STAT	DATA	ETX	BCC
-----	-------	-------	-----	------	------	-----	-----

#### Negative Response Packet

STX	Len_H	Len_L	'N'	ST1	ST2	ETX	BCC
-----	-------	-------	-----	-----	-----	-----	-----

- Note: Add to Data block of above Command Packet Command Packet specified in ISO 7816-4 APDU.



### 7.2.4 'D' (44H) : ICC Deactivation.

#### Command Packet

STX	00H	01H	'D'	ETX	BCC
-----	-----	-----	-----	-----	-----

#### Positive Response Packet

STX	Len_H	Len_L	'P'	STAT	DATA	ETX	BCC
-----	-------	-------	-----	------	------	-----	-----

#### Negative Response Packet

STX	Len_H	Len_L	'N'	ST1	ST2	ETX	BCC
-----	-------	-------	-----	-----	-----	-----	-----

<b>Doc No</b>	<b>KYT74XX SERIES SPECIFICATIONS</b>	<b>REV</b>	<b>PAGE</b>	<b>DATE</b>
		A	17 OF 32	2008. 08 .20.

### 7.3 Setting

#### 7.3.1 'B' (42H): Baud Rate Setting

Set up the baud rate of the Terminal (After then, you must set up baud rate of the host to the same value of the terminal)

Command Packet

STX	00H	02H	'B'	DATA	ETX	BCC
-----	-----	-----	-----	------	-----	-----

DATA:

- '0' – 9600 BPS
- '1' – 19200 BPS (Default)
- '2' – 38400 BPS

Positive Response Packet

STX	00H	02H	'P'	STAT	ETX	BCC
-----	-----	-----	-----	------	-----	-----

Negative Response Packet

STX	Len_H	Len_L	'N'	ST1	ST2	ETX	BCC
-----	-------	-------	-----	-----	-----	-----	-----

#### 7.3.2 'L' (4CH): IC Card Select Command.

It's Default to Select IC Card when Power on.

When Received command of 'I' Card Reader controls card.

To control SIM Card in SAM Slot, user should perform command of 'I' after this command is conducted.

Command Packet

STX	00H	02H	'L'	DATA	ETX	BCC
-----	-----	-----	-----	------	-----	-----

Data: '0' Selection of Inserted Card.

- '1' Selection of SAM1 Slot.
- '2' Selection of SAM2 Slot.(option)

Positive Response Packet

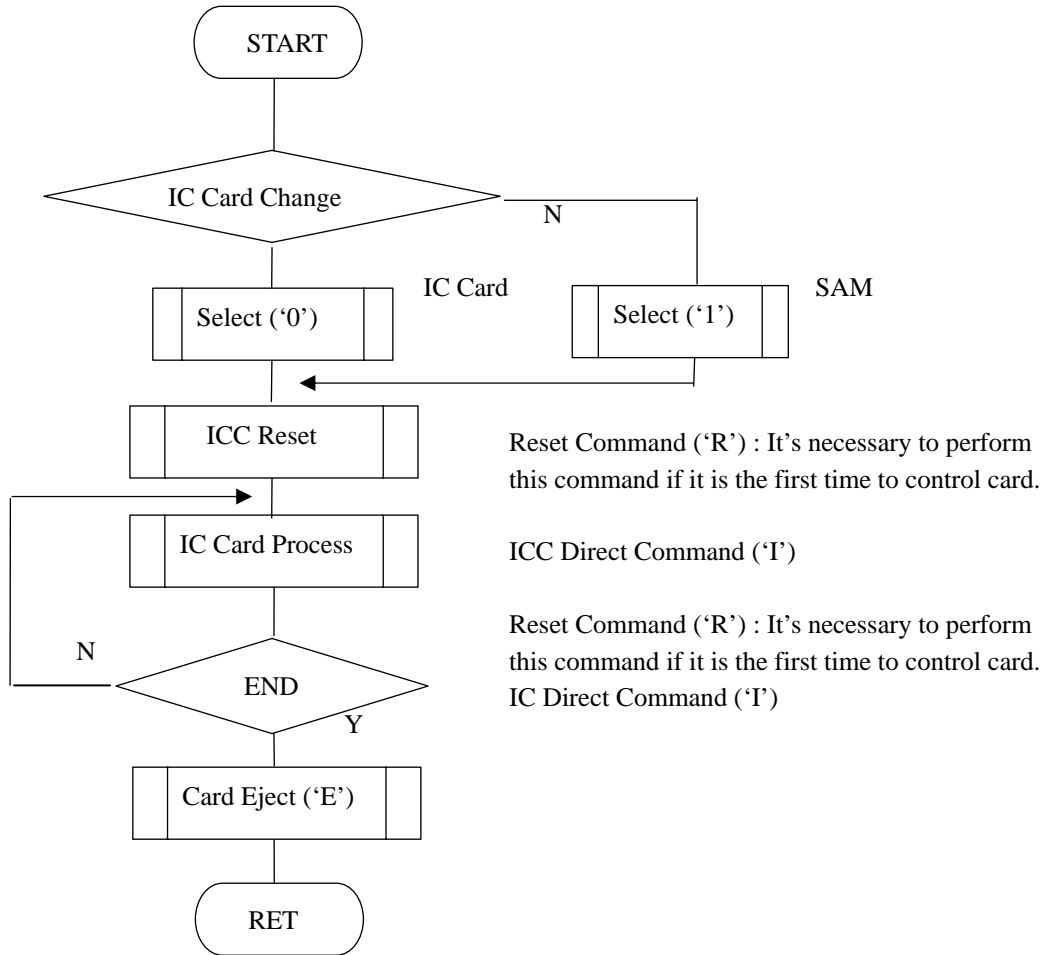
STX	Len_H	Len_L	'P'	STAT	ETX	BCC
-----	-------	-------	-----	------	-----	-----

Negative Response Packet

STX	Len_H	Len_L	'N'	ST1	ST2	ETX	BCC
-----	-------	-------	-----	-----	-----	-----	-----

<b>Doc No</b>	<b>KYT74XX SERIES SPECIFICATIONS</b>	<b>REV</b>	<b>PAGE</b>	<b>DATE</b>
		A	18 OF 32	2008. 08 .20.

IC Card Processing Flow (Example)



<b>Doc No</b>	<b>KYT74XX SERIES SPECIFICATIONS</b>	<b>REV</b>	<b>PAGE</b>	<b>DATE</b>
		A	19 OF 32	2008. 08 .20.

7.4 M/S Data Reading.

7.4.1 'M'(4DH) : A Command to read Magnetic Data.

Command Packet

STX	00H	01H	'M'	ETX	BCC
-----	-----	-----	-----	-----	-----

Positive Response Packet

STX	Len_H	Len_L	'P'	STAT	DATA	ETX	BCC
-----	-------	-------	-----	------	------	-----	-----

DATA :

Track 1 data	00h	Track 2 data	00H	Track 3 data
--------------	-----	--------------	-----	--------------

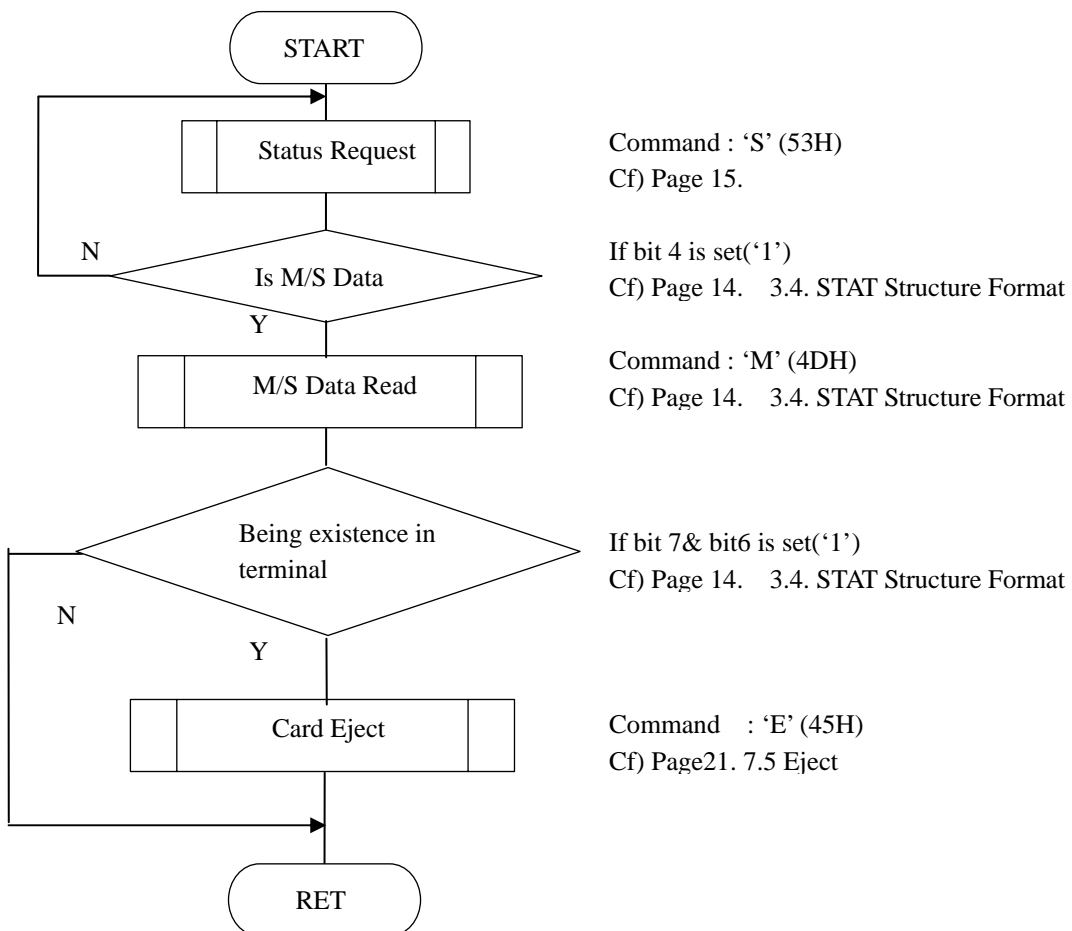
Cf) "00h" byte added to classify each track, And transmit 3 Byte('N',ST1, ST2) every track if Error occur while reading data.

(Page 13 "6. Negative Response Code List" ).

Negative Response Packet

STX	Len_H	Len_L	'N'	ST1	ST2	ETX	BCC
-----	-------	-------	-----	-----	-----	-----	-----

Magnetic Card Processing Flow (Example)



<b>Doc No</b>	<b>KYT74XX SERIES SPECIFICATIONS</b>	<b>REV</b>	<b>PAGE</b>	<b>DATE</b>
		A	20 OF 32	2008. 08 .20.

### 7.5 Eject.

7.5.1 'E'(45H) : A Command to eject a card.

If this Command would be executed while a IC Card being in operation inside reader, IC Card is De-Activated and then ejected.

Command Packet

STX	00H	01H	'E'	ETX	BCC
-----	-----	-----	-----	-----	-----

Positive Response Packet

STX	Len_H	Len_L	'P'	STAT	ETX	BCC
-----	-------	-------	-----	------	-----	-----

Negative Response Packet

STX	Len_H	Len_L	'N'	ST1	ST2	ETX	BCC
-----	-------	-------	-----	-----	-----	-----	-----

### 7.6 RF Command.

Function	Cm0	Cm1	Cm2	Explanation
Sector/Block Get	'F'	0x30	0x30	Sector/Block Get
etection.		0x30	0x31	Card Detection.
Sector & Block Setting		0x30	0x32	Sector & Block Setting
Serial Number		0x30	0x33	Get the MIFARE Card Serial Number
Read		0x31	0x30	MIFARE Card Read
Write		0x31	0x31	MIFARE Card Balance Write.
		0x31	0x32	MIFARE Card Character Write
Increment		0x31	0x33	MIFARE Card Increment.
Decrement		0x31	0x34	MIFARE Card Decrement.
Read		0x31	0x35	MIFARE Card Read Balance
Module Key		0x32	0x30	Module Key Value Change
Card Key		0x32	0x31	Card Secret Key Change.
Key Set		0x32	0x32	Authentication Key set
Card Key Change		0x32	0x33	Card Secret Key Change to other Key
		0x32	0x34	Key Value Change(without access code)
Power On		0x33	0x30	The carrier wave emitted in antenna.
Power Off		0x33	0x31	The carrier wave not emitted in antenna.
Read		0x40	0x30	MIFARE Card Read.(Sector, Block, key)
Write		0x40	0x31	MIFARE Card Balance Write. (Sector, Block, key)
		0x40	0x32	MIFARE Card Character Write(Sector, Block, key)
Increment		0x40	0x33	MIFARE Card Increment. (Sector, Block, key)
Decrement		0x40	0x34	MIFARE Card Decrement. (Sector, Block, key)
Read		0x40	0x35	MIFARE Card Read Balance.(Sector, Block, key)

<b>Doc No</b>	<b>KYT74XX SERIES SPECIFICATIONS</b>	<b>REV</b>	<b>PAGE</b>	<b>DATE</b>
		A	21 OF 32	2008. 08 .20.

### 7.6.1. Sector/Block Get

: Identify the sector and block set at terminal.

Command Packet

STX	Len_H	Len_L	'F'	DATA	ETX	BCC
-----	-------	-------	-----	------	-----	-----

Command DATA Structure

Command[0x30]	Command[0x30]
---------------	---------------

Positive Response Packet

STX	Len_H	Len_L	'P'	STAT	DATA	ETX	BCC
-----	-------	-------	-----	------	------	-----	-----

Negative Response Packet

STX	Len_H	Len_L	'N'	ST1	ST2	ETX	BCC
-----	-------	-------	-----	-----	-----	-----	-----

Response DATA Structure

Sector(1Byte , Hex)	Block(1Byte , Hex)
---------------------	--------------------

### 7.6.2. Card Detection.

: Identify whether if the antenna detect the card.

Command Format

STX	Len_H	Len_L	'F'	DATA	ETX	BCC
-----	-------	-------	-----	------	-----	-----

Command DATA Structure

Command[0x30]	Command[0x31]
---------------	---------------

Positive Response Packet

STX	Len_H	Len_L	'P'	STAT	DATA	ETX	BCC
-----	-------	-------	-----	------	------	-----	-----

Negative Response Packet

STX	Len_H	Len_L	'N'	ST1	ST2	ETX	BCC
-----	-------	-------	-----	-----	-----	-----	-----

Response Data Structure

Status Mode (1Byte, Hex)
--------------------------

<Status Mode>

Value	Detail
0x01	Card Detection
0x00	Card Non-Detection(= No Card)

### 7.6.3. Sector & Block Setting

: Change the sector and block set at terminal.

Command Format

STX	Len_H	Len_L	'F'	DATA	ETX	BCC
-----	-------	-------	-----	------	-----	-----

Command DATA Structure

Command[0x30]	Command[0x32]
---------------	---------------

Sector(1Byte , Hex)	Block(1Byte , Hex)
---------------------	--------------------

Note: Sector Range: 0x00 ~ 0x0f, Block Range: 0x00 ~ 0x03.

Positive Response Packet

STX	Len_H	Len_L	'P'	STAT	ETX	BCC
-----	-------	-------	-----	------	-----	-----

Negative Response Packet

STX	Len_H	Len_L	'N'	ST1	ST2	ETX	BCC
-----	-------	-------	-----	-----	-----	-----	-----

<b>Doc No</b>	<b>KYT74XX SERIES SPECIFICATIONS</b>	<b>REV</b>	<b>PAGE</b>	<b>DATE</b>
		A	22 OF 32	2008. 08 .20.

#### 7.6.4. Serial Value

: Get the RF Card's serial number(UID).

☞ Command Format

STX	Len_H	Len_L	'F'	DATA	ETX	BCC
-----	-------	-------	-----	------	-----	-----

☞ Command DATA Structure

Command[0x30]	Command[0x35]
---------------	---------------

☞ Positive Response Packet

STX	Len_H	Len_L	'P'	STAT	DATA	ETX	BCC
-----	-------	-------	-----	------	------	-----	-----

☞ Negative Response Packet

STX	Len_H	Len_L	'N'	ST1	ST2	ETX	BCC
-----	-------	-------	-----	-----	-----	-----	-----

☞ Response Data Structure

Serial Value(4Byte, Hex)
--------------------------

Note: The RF Card's serial consists of 4 Bytes..

#### 7.6.5. Read Block

: Read the data structure (16 Bytes) of the RF Card

Note : Sector Range: 0x00 ~ 0x0f, Block Range: 0x00 ~ 0x03.

☞ Command Format

STX	Len_H	Len_L	'F'	DATA	ETX	BCC
-----	-------	-------	-----	------	-----	-----

☞ Command DATA Structure

Command[0x31]	Command[0x31]
---------------	---------------

☞ Positive Response Packet

STX	Len_H	Len_L	'P'	STAT	DATA	ETX	BCC
-----	-------	-------	-----	------	------	-----	-----

☞ Negative Response Packet

STX	Len_H	Len_L	'N'	ST1	ST2	ETX	BCC
-----	-------	-------	-----	-----	-----	-----	-----

☞ Response DATA Structure

DATA(16Byte, Hex)
-------------------

#### 7.6.6. Balance Write.

: Write the data at the specified block in the RF Card.

Note: Sector Range: 0x00 ~ 0x0f, Block Range: 0x00 ~ 0x03.

☞ Command Format

STX	Len_H	Len_L	'F'	DATA	ETX	BCC
-----	-------	-------	-----	------	-----	-----

☞ Command DATA Structure

Command[0x31]	Command[0x31]
---------------	---------------

DATA(4Byte, Hex)
------------------

☞ Positive Response Packet

STX	Len_H	Len_L	'P'	STAT	ETX	BCC
-----	-------	-------	-----	------	-----	-----

☞ Negative Response Packet

STX	Len_H	Len_L	'N'	ST1	ST2	ETX	BCC
-----	-------	-------	-----	-----	-----	-----	-----

<b>Doc No</b>	<b>KYT74XX SERIES SPECIFICATIONS</b>	<b>REV</b>	<b>PAGE</b>	<b>DATE</b>
		A	23 OF 32	2008. 08 .20.

7.6.7. Character Write.

: Write the data string at the specified block in the RF Card.

Note: Sector Range: 0x00 ~ 0x0f, Block Range: 0x00 ~ 0x03.

☞ Command Format

STX	Len_H	Len_L	'F'	DATA	ETX	BCC
-----	-------	-------	-----	------	-----	-----

☞ Command DATA Structure

Command[0x31]	Command[0x32]
---------------	---------------

DATA(16Byte, Hex)
-------------------

Cf)DATA : "1234567890123456"

MSB	LSB
0x31 0x32 0x33 .....	0x35 0x36

☞ Positive Response Packet

STX	Len_H	Len_L	'P'	STAT	ETX	BCC
-----	-------	-------	-----	------	-----	-----

☞ Negative Response Packet

STX	Len_H	Len_L	'N'	ST1	ST2	ETX	BCC
-----	-------	-------	-----	-----	-----	-----	-----

7.6.8. Increment.

: Increase the RF Card's Balance as much as a given data value.

Note: Sector Range: 0x00 ~ 0x0f, Block Range: 0x00 ~ 0x02.

☞ Command Format

STX	Len_H	Len_L	'F'	DATA	ETX	BCC
-----	-------	-------	-----	------	-----	-----

☞ Command DATA Structure

Command[0x31]	Command[0x33]
---------------	---------------

☞ Command DATA Structure

DATA(4Byte, Hex)
------------------

☞ Positive Response Packet

STX	Len_H	Len_L	'P'	STAT	ETX	BCC
-----	-------	-------	-----	------	-----	-----

☞ Negative Response Packet

STX	Len_H	Len_L	'N'	ST1	ST2	ETX	BCC
-----	-------	-------	-----	-----	-----	-----	-----

7.6.9. Decrement

: Decrease the RF Card's Balance as much as a given data value.

Note: Sector Range: 0x00 ~ 0x0f, Block Range: 0x00 ~ 0x02.

☞ Command Format

STX	Len_H	Len_L	'F'	DATA	ETX	BCC
-----	-------	-------	-----	------	-----	-----

☞ Command DATA Structure

Command[0x31]	Command[0x34]
---------------	---------------

☞ Command DATA Structure

DATA(4Byte, Hex)
------------------

☞ Positive Response Packet

STX	Len_H	Len_L	'P'	STAT	ETX	BCC
-----	-------	-------	-----	------	-----	-----

☞ Negative Response Packet

STX	Len_H	Len_L	'N'	ST1	ST2	ETX	BCC
-----	-------	-------	-----	-----	-----	-----	-----

<b>Doc No</b>	<b>KYT74XX SERIES SPECIFICATIONS</b>	<b>REV</b>	<b>PAGE</b>	<b>DATE</b>
		A	24 OF 32	2008. 08 .20.

#### 7.6.10. Read Balance

: Read the RF Card's Balance.

Note: Sector Range: 0x00~ 0x0f, Block Range: 0x01 ~ 0x02.

☞ Command Format

STX	Len_H	Len_L	'F'	DATA	ETX	BCC
-----	-------	-------	-----	------	-----	-----

☞ Command DATA Structure

Command[0x31]	Command[0x35]
---------------	---------------

☞ Positive Response Packet

STX	Len_H	Len_L	'P'	STAT	DATA	ETX	BCC
-----	-------	-------	-----	------	------	-----	-----

☞ Negative Response Packet

STX	Len_H	Len_L	'N'	ST1	ST2	ETX	BCC
-----	-------	-------	-----	-----	-----	-----	-----

☞ Response DATA Structure

DATA(4Byte, Hex)
------------------

#### 7.6.11. Module Key Value Change

: Change the RF Card Key Value required for authentication.

☞ Command Format

STX	Len_H	Len_L	'F'	DATA	ETX	BCC
-----	-------	-------	-----	------	-----	-----

☞ Command DATA Structure

Command[0x32]	Command[0x30]
---------------	---------------

Sector	-	KEY A	KEY B
Sector(1Byte, Hex)	0x01	DATA (6Byte, Hex)	DATA (6Byte,Hex)

Sector : 0x00 ~ 0x0f, All Sector : 0xff

KEYA, KEYB : Authentication Key data.

☞ Positive Response Packet

STX	Len_H	Len_L	'P'	STAT	ETX	BCC
-----	-------	-------	-----	------	-----	-----

☞ Negative Response Packet

STX	Len_H	Len_L	'N'	ST1	ST2	ETX	BCC
-----	-------	-------	-----	-----	-----	-----	-----

#### 7.6.12. Card Secret Key Change.

: Change the RF Card Key Value.

☞ Command Format

STX	Len_H	Len_L	'F'	DATA	ETX	BCC
-----	-------	-------	-----	------	-----	-----

☞ Command DATA Structure

Command[0x32]	Command[0x31]
---------------	---------------

☞ Command DATA Structure

Sector(1Byte, Hex)	KEYA(6Byte, Hex)	KEYB(6Byte,Hex)
--------------------	------------------	-----------------

Sector(0x00 ~ 0x0f)

☞ Positive Response Packet

STX	Len_H	Len_L	'P'	STAT	ETX	BCC
-----	-------	-------	-----	------	-----	-----

☞ Negative Response Packet

STX	Len_H	Len_L	'N'	ST1	ST2	ETX	BCC
-----	-------	-------	-----	-----	-----	-----	-----

<b>Doc No</b>	<b>KYT74XX SERIES SPECIFICATIONS</b>	<b>REV</b>	<b>PAGE</b>	<b>DATE</b>
		A	25 OF 32	2008. 08 .20.

7.6.13. Authentication Key.

: Select the authentication key( KeyA, KeyB).

↳ Command Format

STX	Len_H	Len_L	'F'	DATA	ETX	BCC
-----	-------	-------	-----	------	-----	-----

↳ Command DATA Structure

Command[0x32]	Command[0x32]
---------------	---------------

Key Select(1Byte, Hex)
------------------------

<Key Select>

7	6	5	4	3	2	1	0
0	0	0	0	0	0	X	X

Low(4bit)	Detail
0x00	Key A
0x01	Key B

↳ Positive Response Packet

STX	Len_H	Len_L	'P'	STAT	ETX	BCC
-----	-------	-------	-----	------	-----	-----

↳ Negative Response Packet

STX	Len_H	Len_L	'N'	ST1	ST2	ETX	BCC
-----	-------	-------	-----	-----	-----	-----	-----

6.5.16. Card Secret Key Change to other Key

: Change the RF Card Key Value.

↳ Command Format

STX	Len_H	Len_L	'F'	DATA	ETX	BCC
-----	-------	-------	-----	------	-----	-----

↳ Command DATA Structure

Command[0x32]	Command[0x33]
---------------	---------------

Sector(1Byte, Hex)	KEYA(6Byte, Hex)	Access(4Byte, Hex)	KEYB(6Byte,Hex)
--------------------	------------------	--------------------	-----------------

Sector(0x00 ~ 0x0F)

↳ Positive Response Packet

STX	Len_H	Len_L	'P'	STAT	ETX	BCC
-----	-------	-------	-----	------	-----	-----

↳ Negative Response Packet

STX	Len_H	Len_L	'N'	ST1	ST2	ETX	BCC
-----	-------	-------	-----	-----	-----	-----	-----

<b>Doc No</b>	<b>KYT74XX SERIES SPECIFICATIONS</b>	<b>REV</b>	<b>PAGE</b>	<b>DATE</b>
		A	26 OF 32	2008. 08 .20.

#### 6.1.17. Key Value Change

: Change the RF Card Key Value required for authentication.

☞ Command Format

STX	Len_H	Len_L	'F'	DATA	ETX	BCC
-----	-------	-------	-----	------	-----	-----

☞ Command DATA Structure

Command[0x32]	Command[0x34]
---------------	---------------

Key(1Byte, Hex)	Sector(1Byte, Hex)	DATA (6Byte, Hex)	DATA (6Byte,Hex)
-----------------	--------------------	-------------------	------------------

\* Key Name

Key Location	Value
Key 0	0x01

\* Sector(1Byte, Hex) : 0x00 ~ 0x0F

☞ Positive Response Packet

STX	Len_H	Len_L	'P'	STAT	ETX	BCC
-----	-------	-------	-----	------	-----	-----

☞ Negative Response Packet

STX	Len_H	Len_L	'N'	ST1	ST2	ETX	BCC
-----	-------	-------	-----	-----	-----	-----	-----

#### 6.5.18. Power On.

: The carrier wave emitted in antenna.

☞ Command Format

STX	Len_H	Len_L	'F'	DATA	ETX	BCC
-----	-------	-------	-----	------	-----	-----

☞ Command DATA Structure

Command[0x33]	Command[0x30]
---------------	---------------

☞ Positive Response Packet

STX	Len_H	Len_L	'P'	STAT	ETX	BCC
-----	-------	-------	-----	------	-----	-----

☞ Negative Response Packet

STX	Len_H	Len_L	'N'	ST1	ST2	ETX	BCC
-----	-------	-------	-----	-----	-----	-----	-----

#### 6.5.19. Power Off

: The carrier wave not emitted in antenna.

☞ Command Format

STX	Len_H	Len_L	'F'	DATA	ETX	BCC
-----	-------	-------	-----	------	-----	-----

☞ Command DATA Structure

Command[0x33]	Command[0x31]
---------------	---------------

☞ Positive Response Packet

STX	Len_H	Len_L	'P'	STAT	ETX	BCC
-----	-------	-------	-----	------	-----	-----

☞ Negative Response Packet

STX	Len_H	Len_L	'N'	ST1	ST2	ETX	BCC
-----	-------	-------	-----	-----	-----	-----	-----

<b>Doc No</b>	<b>KYT74XX SERIES SPECIFICATIONS</b>	<b>REV</b>	<b>PAGE</b>	<b>DATE</b>
		A	27 OF 32	2008. 08 .20.

6.5.20. Read Block.

: Read the data structure (16 Bytes) of the RF Card

☞ Command Format

STX	Len_H	Len_L	'F'	DATA	ETX	BCC
-----	-------	-------	-----	------	-----	-----

☞ Command DATA Structure

Command[0x34]	Command[0x30]
---------------	---------------

KEY Type	Sector (1Byte , Hex)	Block (1Byte , Hex)	Secret Key(6Byte, Hex)
----------	----------------------	---------------------	------------------------

KEY Type : KEYA(0x00), KEYB(0x01) , Sector : 0x00 ~ 0x0f, Block : 0x00 ~ 0x03, Secret Key(6byte).

☞ Positive Response Packet

STX	Len_H	Len_L	'P'	STAT	DATA	ETX	BCC
-----	-------	-------	-----	------	------	-----	-----

☞ Negative Response Packet

STX	Len_H	Len_L	'N'	ST1	ST2	ETX	BCC
-----	-------	-------	-----	-----	-----	-----	-----

☞ Response DATA Structure

DATA(16Byte, Hex)
-------------------

6.5.21. Balance Write.

: Write the data at the specified block in the RF Card.

☞ Command Format

STX	Len_H	Len_L	'F'	DATA	ETX	BCC
-----	-------	-------	-----	------	-----	-----

☞ Command DATA Structure

Command[0x34]	Command[0x31]
---------------	---------------

KEY Type	Sector (1Byte , Hex)	Block (1Byte , Hex)	Secret Key(6Byte, Hex)
----------	----------------------	---------------------	------------------------

Balance Data (4Byte, Hex)
---------------------------

KEY Type : KEYA(0x00), KEYB(0x01) , Sector : 0x00 ~ 0x0f, Block : 0x00 ~ 0x03, Secret Key(6byte).

☞ Positive Response Packet

STX	Len_H	Len_L	'P'	STAT	ETX	BCC
-----	-------	-------	-----	------	-----	-----

☞ Negative Response Packet

STX	Len_H	Len_L	'N'	ST1	ST2	ETX	BCC
-----	-------	-------	-----	-----	-----	-----	-----

6.5.22. Character Write.

: Write the data string at the specified block in the RF Card.

☞ Command Format

STX	Len_H	Len_L	'F'	DATA	ETX	BCC
-----	-------	-------	-----	------	-----	-----

☞ Command DATA Structure

Command[0x34]	Command[0x32]
---------------	---------------

KEY Type	Sector (1Byte , Hex)	Block (1Byte , Hex)	Secret Key(6Byte, Hex)
----------	----------------------	---------------------	------------------------

DATA(16Byte, Hex)
-------------------

KEY Type : KEYA(0x00), KEYB(0x01) , Sector : 0x00 ~ 0x0f, Block : 0x00 ~ 0x03, Secret Key(6byte).

Cf) DATA : "1234567890123456"

MSB	LSB
0x31 0x32 0x33 .....	0x35 0x36

<b>Doc No</b>	<b>KYT74XX SERIES SPECIFICATIONS</b>	<b>REV</b>	<b>PAGE</b>	<b>DATE</b>
		A	28 OF 32	2008. 08 .20.

☞ Positive Response Packet

STX	Len_H	Len_L	'P'	STAT	ETX	BCC
-----	-------	-------	-----	------	-----	-----

☞ Negative Response Packet

STX	Len_H	Len_L	'N'	ST1	ST2	ETX	BCC
-----	-------	-------	-----	-----	-----	-----	-----

#### 6.5.23. Increment.

: Increase the RF Card's Balance as much as a given data value.

☞ Command Format

STX	Len_H	Len_L	'F'	DATA	ETX	BCC
-----	-------	-------	-----	------	-----	-----

☞ Command DATA Structure

Command[0x34]	Command[0x33]
---------------	---------------

KEY Type	Sector (1Byte , Hex)	Block (1Byte , Hex)	Secret Key(6Byte, Hex)
Balance Data (4Byte, Hex)			

KEY Type : KEYA(0x00), KEYB(0x01) , Sector : 0x00 ~ 0x0f, Block : 0x00 ~ 0x03, Secret Key(6byte).

☞ Positive Response Packet

STX	Len_H	Len_L	'P'	STAT	ETX	BCC
-----	-------	-------	-----	------	-----	-----

☞ Negative Response Packet

STX	Len_H	Len_L	'N'	ST1	ST2	ETX	BCC
-----	-------	-------	-----	-----	-----	-----	-----

#### 6.5.24. Decrement

: Decrease the RF Card's Balance as much as a given data value.

☞ Command Format

STX	Len_H	Len_L	'F'	DATA	ETX	BCC
-----	-------	-------	-----	------	-----	-----

☞ Command DATA Structure

Command[0x34]	Command[0x34]
---------------	---------------

KEY Type	Sector (1Byte , Hex)	Block (1Byte , Hex)	Secret Key(6Byte, Hex)
Balance Data (4Byte, Hex)			

KEY Type : KEYA(0x00), KEYB(0x01) , Sector : 0x00 ~ 0x0f, Block : 0x00 ~ 0x03, Secret Key(6byte).

☞ Positive Response Packet

STX	Len_H	Len_L	'P'	STAT	ETX	BCC
-----	-------	-------	-----	------	-----	-----

☞ Negative Response Packet

STX	Len_H	Len_L	'N'	ST1	ST2	ETX	BCC
-----	-------	-------	-----	-----	-----	-----	-----

<b>Doc No</b>	<b>KYT74XX SERIES SPECIFICATIONS</b>	<b>REV</b>	<b>PAGE</b>	<b>DATE</b>
		A	29 OF 32	2008. 08 .20.

6.5.25. Read Balance

: Read the RF Card's Balance.

↳ Command Format

STX	Len_H	Len_L	'F'	DATA	ETX	BCC
-----	-------	-------	-----	------	-----	-----

↳ Command DATA Structure

Command[0x34]	Command[0x35]
---------------	---------------

KEY Type	Sector (1Byte , Hex)	Block (1Byte , Hex)	Secret Key(6Byte, Hex)
----------	----------------------	---------------------	------------------------

KEY Type : KEYA(0x00), KEYB(0x01) , Sector : 0x00 ~ 0x0f, Block : 0x00 ~ 0x03, Secret Key(6byte).

↳ Positive Response Packet

STX	Len_H	Len_L	'P'	STAT	DATA	ETX	BCC
-----	-------	-------	-----	------	------	-----	-----

↳ Negative Response Packet

STX	Len_H	Len_L	'N'	ST1	ST2	ETX	BCC
-----	-------	-------	-----	-----	-----	-----	-----

↳ Response DATA Structure

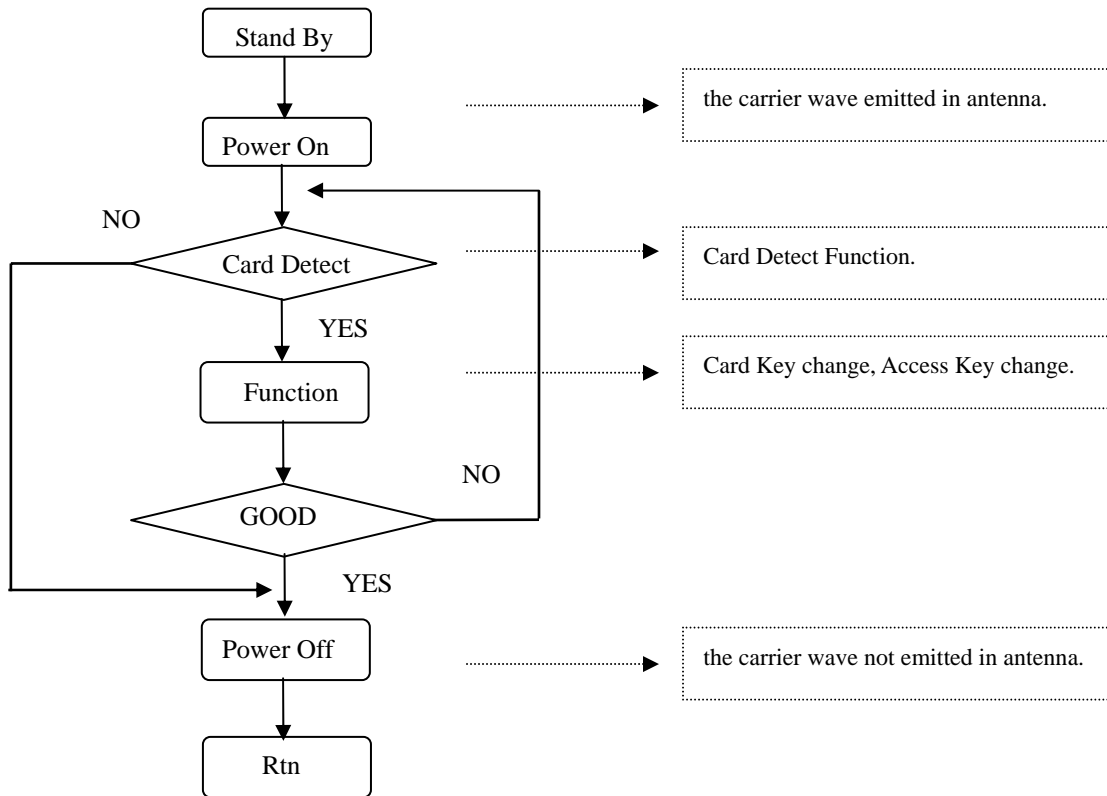
DATA(4Byte, Hex)
------------------

Doc No	KYT74XX SERIES SPECIFICATIONS	REV	PAGE	DATE
		A	30 OF 32	2008. 08 .20.

**EXECUTION PROCEDURES**

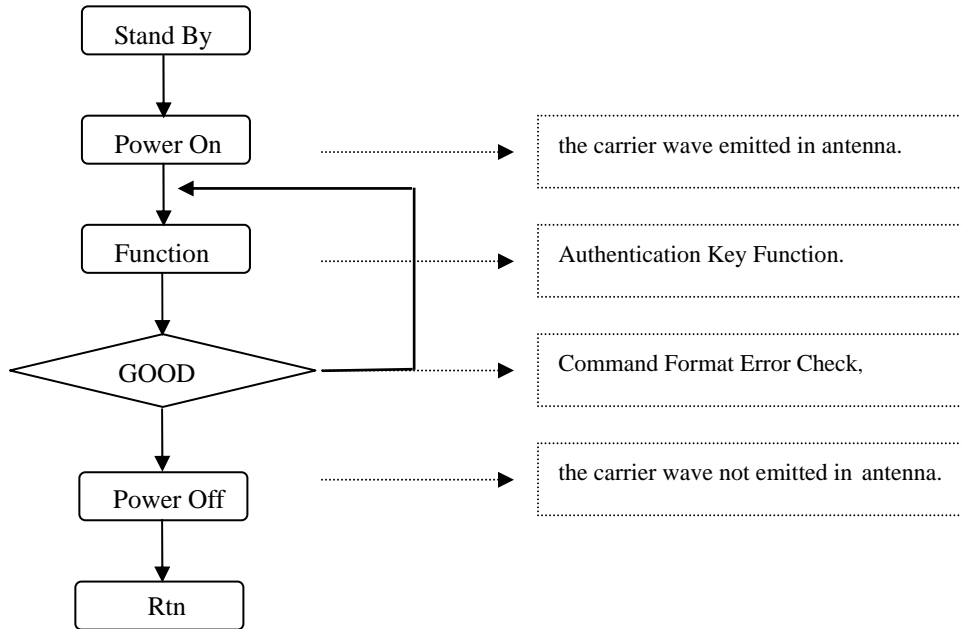
This is a flowchart that describes how to operate the read, write, increment and decrement command after detecting the card. However, it is possible to read, write, increase and decrease without detecting a card.

1. Card Key change, Access Key change Function.



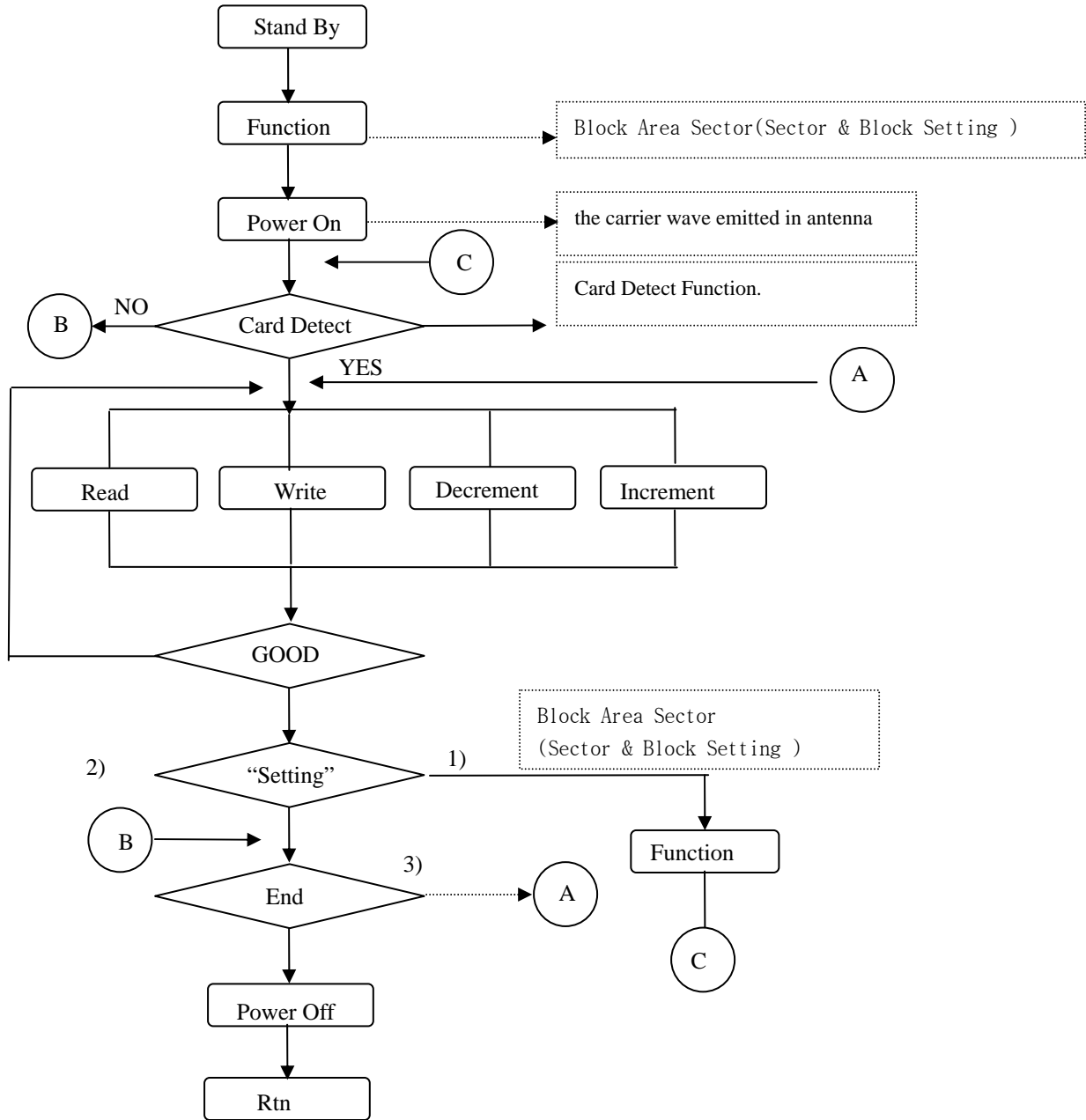
Doc No	KYT74XX SERIES SPECIFICATIONS	REV	PAGE	DATE
		A	31 OF 32	2008. 08 .20.

2. Authentication Key Function.



Doc No	KYT74XX SERIES SPECIFICATIONS	REV	PAGE	DATE
		A	32 OF 32	2008. 08 .20.

3. Read/Write, Increment/Decrement, Balance Write/ Balance Read



- 1 : "Setting" is for new Sector or Block, not previous Sector or Block
- 2 : Confirm all the process for present card is completed.
- 3 : the carrier wave not emitted in antenna